

## Villa Type A2 (5 Bedrooms)

Built Up Area

Ground Floor 107 m<sup>2</sup>

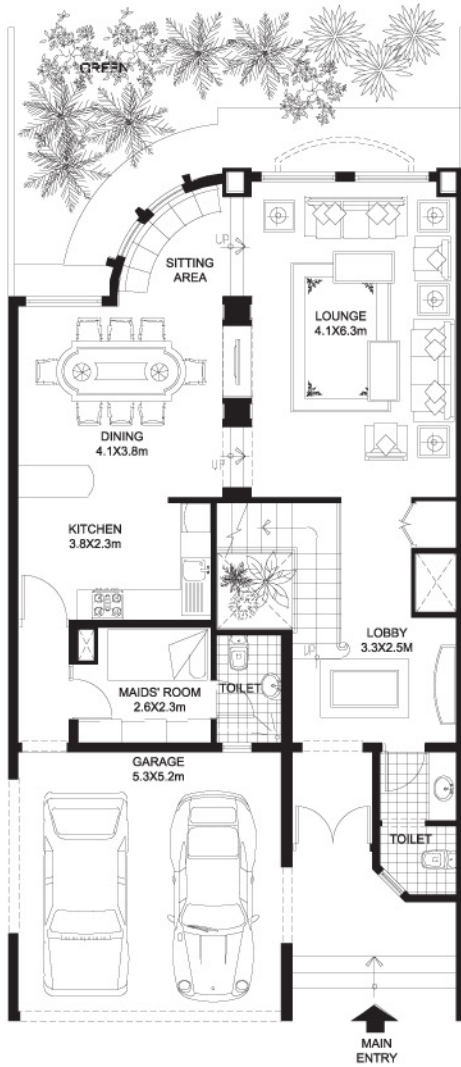
First Floor 127 m<sup>2</sup>

Second Floor 49 m<sup>2</sup>

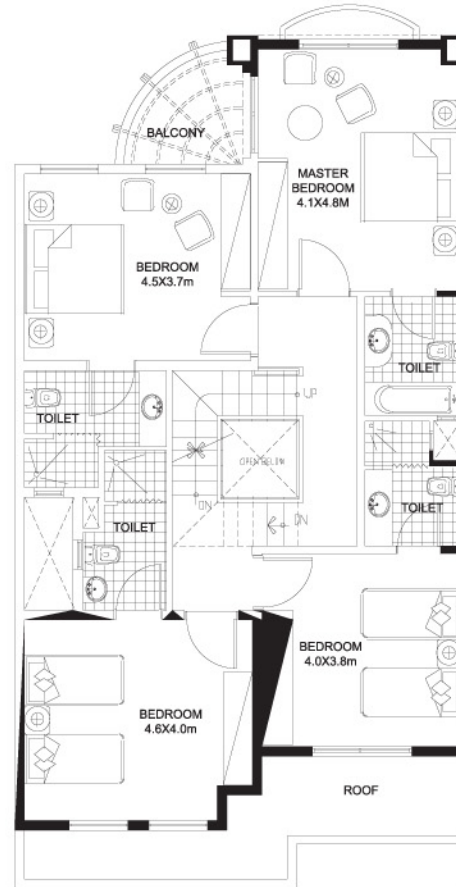
Garage 32 m<sup>2</sup>

Porch 10 m<sup>2</sup>

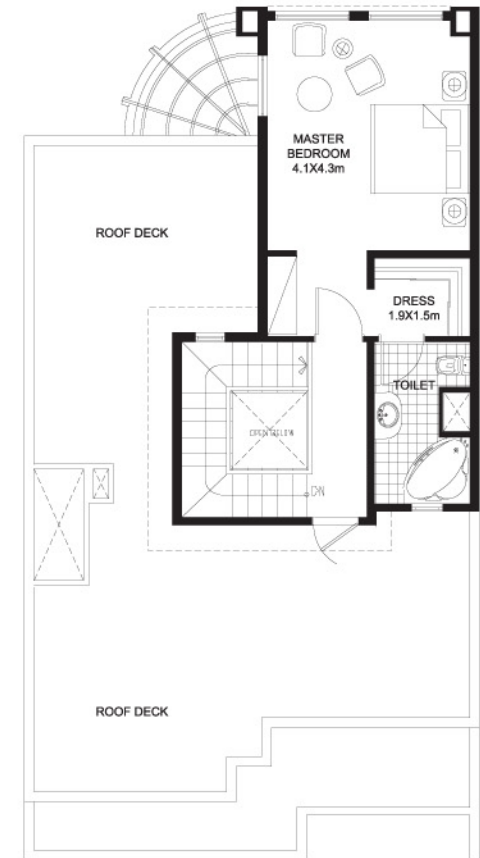
Total 325 m<sup>2</sup>



GROUND FLOOR PLAN



FIRST FLOOR PLAN



SECOND FLOOR PLAN

## Villa Type A4 (5 Bedrooms)

Built Up Area

Ground Floor 107 m<sup>2</sup>

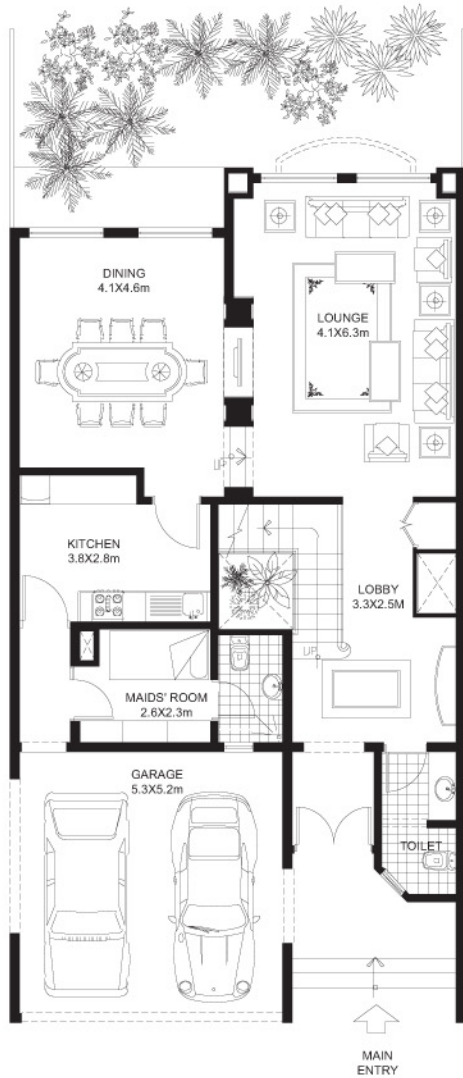
First Floor 127 m<sup>2</sup>

Second Floor 49 m<sup>2</sup>

Garage 32 m<sup>2</sup>

Porch 10 m<sup>2</sup>

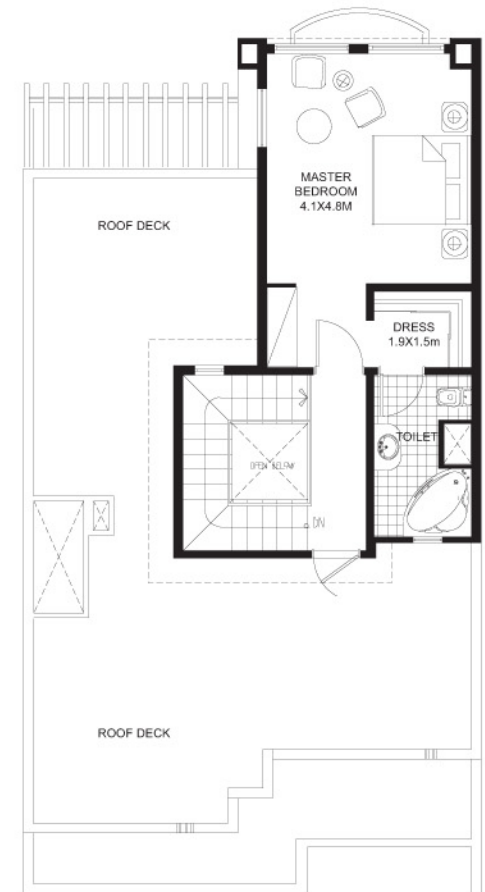
Total 325 m<sup>2</sup>



GROUND FLOOR PLAN



FIRST FLOOR PLAN



SECOND FLOOR PLAN